



SLA-215 is a large format line array system that maintain excellent acoustics while putting 8 pcs or 10 pcs speakers along with wave guide inside the limited space of an enclosure.

Dual 15" utilizes all neodymium woofer & drivers, which ensures high sensitivity, compact size and less weight. Up to 148dB sensitivity delivered by two compression tweeters with 72mm titanium voice coil loaded in an integrated wave guide which meets all physics criteria of wave sculpture technology. With double 10" mid-range drivers, which are able to couple mid range smoothly and completely, no extra adjustment from EQ even needed. Two 15" woofers placed as V shape side by side with the mid-range. The special formulated carbon fiber cone gives ultra strengthen and lightness to mi-low frequency.

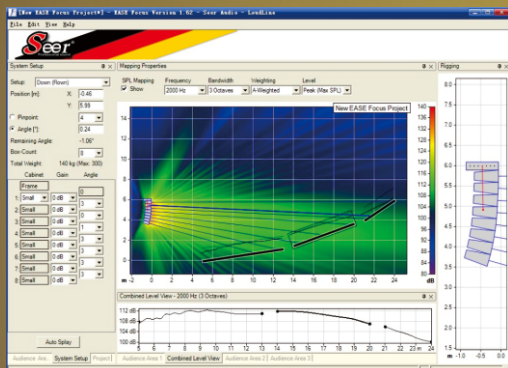
Outdoor use with black catalyzed polyurethane paint finishing.

SLA-215 works together with smart & predictable rigging system, the extraordinary speaker is the perfect choice which fits for all kind of touring applications.

SLA-215 Line Array Speaker Series

Features

- ➔ 3-way line array system
- ➔ High efficiency energy output
- ➔ Far-flung coverage
- ➔ Professional flying setting, safe and reliable
- ➔ Fast install, waterproof paint



SLA-SERIES

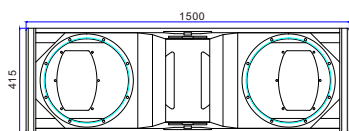
3-WAY

Neodymium Line Array Speaker

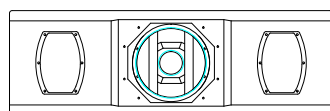


SLA-215

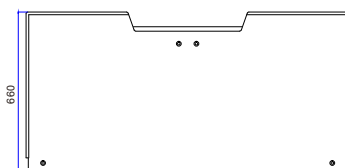
→ Install Size:



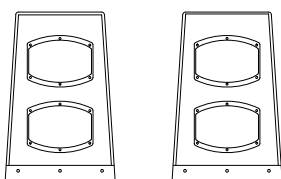
Front



Rear



Top



Side

Specification

Frequency response	40Hz-18KHz
Directivity angle	H100° X V10°
Long-term power(RMS)	300W/600W/1000W(HF/MF/LF)
Peak Power Handling	600W/1200W/2000W(HF/MF/LF)
Impedance	8ohms / 8ohms/8ohms(HF/MF/LF)
Sensitivity	125dB/122dB/116dB(HF/MF/LF)
Maximum SPL	142dB/135dB/131dB(HF/MF/LF)
Connection	2XNL 8Speakon
Enclosure Construction	15-Birch plywood
Cabinet Surface Treatment	Black Catalyzed Polyurethane Paint
Dimensions(HxWxD)	415 x1500x660(mm)
Low	2x15 IN(380mm)
Mid	2x10 IN (260mm)
High	2x3 IN (72mm)
N.W.	73Kg

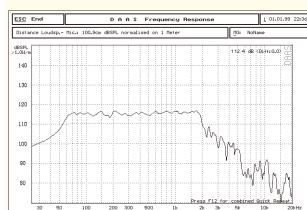
Applications

- Big gymnasium, sporting place, all kind of performance movements
- Medium and large touring, theatre.

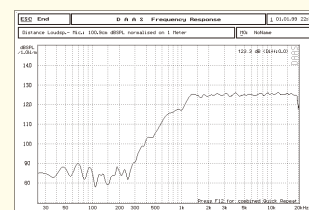
The technique diagram show

Sensitivity Curve →

LF



HF



MF

